



anand@gssrtech.com | 056 1488635
050 8972753



WHITE STONE SOLID SURFACE

Shaping Solid Surface For Interiors





anand@gssrtech.com | 056 1488635
050 8972753



WHITE STONE
SOLID SURFACE

Shaping Solid Surface For Interiors



MANUFACTURER
&
FABRICATOR
OF
SOLID SURFACE



WHITE STONE
SOLID SURFACE



Hanex
Solid Surfaces



FABRICATOR OF ALL SOLID SURFACE BRANDS



anand@gssrtech.com | 056 1488635
050 8972753



WHITE STONE SOLID SURFACE

Shaping Solid Surface For Interiors

COMPANY PROFILE

Incorporated since 2013, White Stone **WS** is a premier Fabricator and Manufacturing company utilizing all brands of solid surfaces in its product offering. The company addresses all phases of construction from commercial, to major production builders, to custom residences in the GCC marketplace. **WS** Surfaces has also developed a line of commercial restroom toilet partitions and counter tops that can be custom manufactured from any specified solid surface. This line is sold throughout the GCC and Asian Countries.

WS focuses on artificial material business, such as Solid Surface Sink, Solid Surface Basin, Solid Surface Sheet, whose manufacture base is a modern enterprise integrates with research, development, production, marketing and service in solid surface material, It aims to provide quality acrylic surface material products to an audience ranging in size and scope from the average homeowner to companies that are looking to complete larger scale products.



Our company is located in Umm Al Quwain. **WS** insists on doing both-win business with each Client and being trustable supplier to each Client, so it always does best to offer good product development, good product quality, good customer service, and try to bring good product to each customer to meet the market.

As well as paying attention to the product, **WS** also always focuses on quality service, not only at the pre-sale service, also at after-sale service to make sure well service to each customer. "Innovative technology, First Service, Green Environment, Reliability." is core element of **WS** management philosophy, which reinforces **WS** to become the reliable supplier to the market.



MANUFACTURER OF **WS** sheets

WS Solid surface sheets are manufactured by **WS** (WHITE STONE SOLID SURFACE) by mixing acrylic epoxide or polyester resin powdered bauxite filter and pigments. The material chemically cures and is heated to 60 °C or more. Cured material is then cut in sheets or shapes and sanded one or both sides using drum sander for high quality sheets. Sometimes the material is brought to 160 °C and cooled, to improve its heat resistance.

WS Acrylic-modified polyester solid surface can be mixed one sheet at a time using different formulations, effects and appearances. Acrylic-modified polyester solid surface can be injected into molds to produce various solid decorative design figures.

WS can also be moulded using dedicated moulds. For example free standing baths are manufactured using a two-part mould tool which creates a cavity for the material to be poured into. Once the mould has been prepared for casting, the material is mixed and degassed in an automated casting machine. It is then injected into the cavity of the mould. Many finishes are available including, gel coated, matte, gloss, metallic and textured.

TECHNICAL DATA

Property	Standard	Status	Regular Product	HQ-White Stone Product	WHITE STONE SOLID SURFACE SHEET SIZE
Boiling water Resistance	ISSFA SST 8.100	Pass at 100C	Pass at 90	Pass	
Flexural Strength	ASTM D 790	>27.58 MPa	43	53.7	
Flexural modulus	ASTM D 790	>=6895	9200	16800	
Product Hardness "by Barcol Scale	ASTM D2583	50--70	57	62	
Flatness	ISSFA SST 4.1-00	<1.6MM	<1.5	<1.5	
Impact resistance	ISSFA SST 6.100	at 1525 mm	Pass at 1300mm	Pass	
High Temperature resistance	ISSFA SST 9 100	Pass at 180	Pass at 110 Pass	Pass	
Bubbles and Suspension	ISSFA SST 7.100	Accept	Accept	Accept	
Colour Stability	ISSFA SST 2 100	Accept	Accept	Accept	



Fabrication

WS being a fabricator too, our fabricator shapes and installs functional and decorative surfaces, usually in buildings. Surface fabrication, as a distinct professional enterprise, usually involves complex tasks of surface shaping. Our fabrication includes router drills, templates, clamps, ovens, suction cup for grips and table saws. Larger surface fabricators may also use **CNC routers**. For all but the simplest jobs, surface fabrication usually takes place in the workshop, after which the finished product is assembled and installed at the work site. Installation of multi-part surfaces, such as "L" and "U" shaped countertops, often involves complex work with specialized tools, to create a seamless result.



Applications

WS is used in the following environment;

- **Kitchen/Bathroom:** kitchen worktops with integrated sink, vanity countertop, bath tub etc.
- **Hospitality/Catering:** bars, tables, reception desks etc.
- **Shop Fitting:** displays, counters, wall cladding etc.
- **Airports:** check-in counters
- **Public buildings:** displays in museums, facades, meeting tables etc.
- **Hospitals:** laboratory countertops, decontamination sinks, endoscopy etc.



WHITE STONE BOWLS



WS 501
Size 520X350mm



WS 502
Size 420X340mm



WS 503
Size 390X290mm



WS 504
Size 400X400mm



WS 505
Size 490X490X100mm



WHITE STONE SINKS



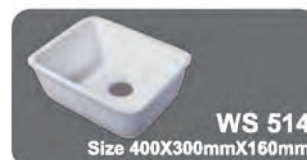
WS 511
Size 400X400mm



WS 512
Size 410X350mmX170mm



WS 513
Size 500X380mmX150mm



WS 514
Size 400X300mmX160mm



WS 515
Size 350X290mmX130mm



anand@gssrtech.com | 056 1488635
050 8972753



WHITE STONE SOLID SURFACE

Shaping Solid Surface For Interiors

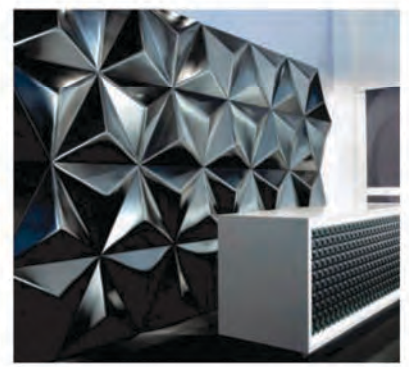
CNC Works



Vanity
Countertops



Column &
Wall Cladding



Reception
Counters



Kitchen
Top





anand@gssrtech.com | 056 1488635
050 8972753



WHITE STONE SOLID SURFACE

Shaping Solid Surface For Interiors

PROJECTS DONE BY WHITE STONE



Emirates pride perfumes Mirdif City center



Mirdif City center Uncle fluffy



Mall of Emirates Zeman Awwal Flooring



Ahmed Al Maghribi Perfumes



Mall of Emirates Salsa



Zahia City Center Lamore Perfumes



Zahia City Center Harman House Column cladding



Pedicure Sink



WS White Carara



WS Sunrise



WS Oak Carara



anand@gssrtech.com | 056 1488635
050 8972753



WHITE STONE
SOLID SURFACE

Shaping Solid Surface For Interiors

WHITE STONE VEINES & SHADES

NEW MARBLE SHADE SERIES



WS White Carara



WS White Carara Mix



WS Black Carara



WS Brown Carara



WS Beige Carara



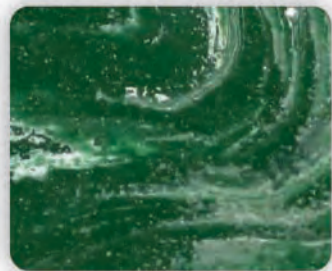
WS Sand Carara



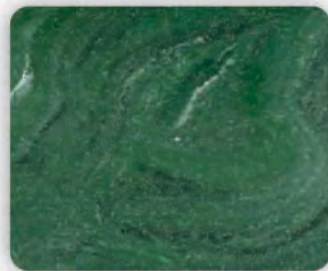
WS Deep Wood



WS Quick Sand



WS Leaf 6022#1



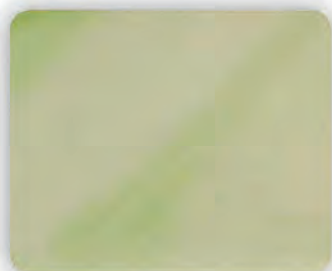
WS Leaf 6022#2



WS Leaf 6017#1



WS Leaf 6017#2



WS Green Carara



WS Blue Carara



WS Yellow Carara



WS Pink Carara



WS Sunrise



WS White Onyx



WS Crystal Onyx



WS Oak Carara



anand@gssrtech.com | 056 1488635
050 8972753



STANDARD COLORS

WHITE STONE SOLID SURFACE

Shaping Solid Surface For Interiors



WS 01



WS 02
(Designer White)



WS 03



WS 04



WS 05



WS 06



WS 07



WS 08



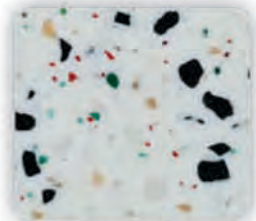
WS 09



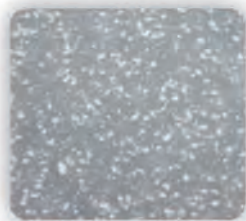
WS 10



WS 161



WS 162



WS 163



WS 164



WS 165



WS 48



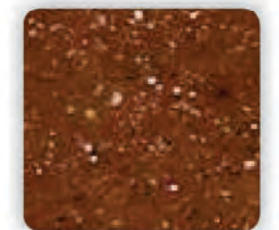
WS 49



WS 50



WS 51



WS 52



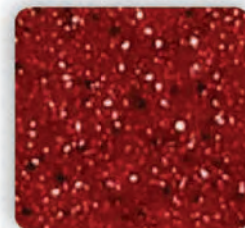
WS 53



WS 61



WS 62



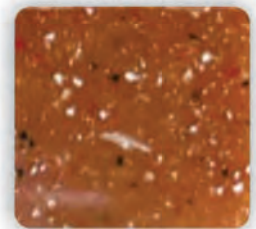
WS 63



WS 64



WS 621



WS 81



WS 82



WS 83



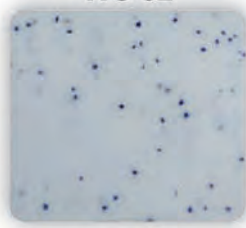
WS 84



WS 85



WS 851



WS 90



WS 98



WS 106



anand@gssrtech.com | 056 1488635
050 8972753



WHITE STONE SOLID SURFACE

Shaping Solid Surface For Interiors



WS 101



WS 102



WS 103



WS 104



WS 105



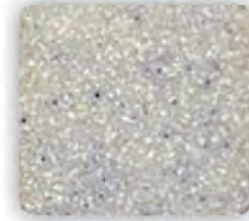
WS 106



WS 107



WS 109



WS 110



WS 111



WS 112



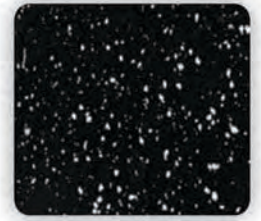
WS 113



WS 114



WS 115



WS 93



WS 117



WS 118



WS 119



WS 120



WS 47



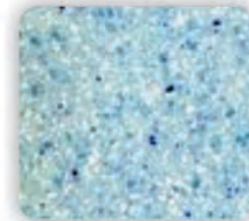
WS 41



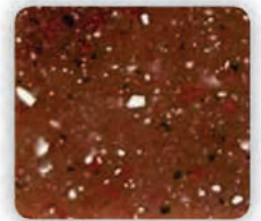
WS 42



WS 43



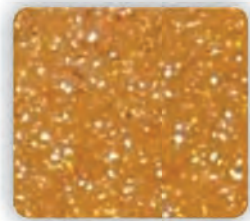
WS 44



WS 45



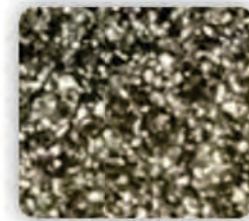
WS 46



WS 54



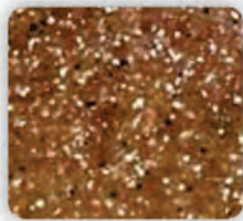
WS 55



WS 56



WS 57



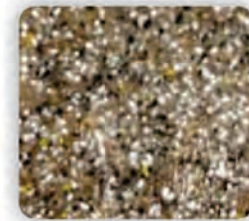
WS 58



WS 60



WS 69



WS 68



WS 91



anand@gssrtech.com | 056 1488635
050 8972753



WHITE STONE
SOLID SURFACE

Shaping Solid Surface For Interiors



LIST OF PROJECTS

Dubai Airport
Makhtoom Airport
Sharjah Airport
Dubai Air show
Hotel Mamzar park
Hotel Aloft
Hotel Hilton
Hotel Saraya Ajman
Hotel Bab al shams
Aster Hospital
Aster clinic

NMC Hospital
Prime Medical Center
American Hospital
Medicare Hospital
Gems Wellington school
Modern English School
American School of creative science
West Minister School
Dubai International school
Fitness First GYM
Etisalat outlets



WHITE STONE

SOLID SURFACE

WHITE STONE

SOLID SURFACE

Shaping Solid Surface For Interiors



Email: anand@gssrtech.com | rafi@gssrtech.com

Mobile: 056 148 8635, 050 351 2909 | 050 897 2753

DUBAI | SHARJAH | ABU DHABHI | AJMAN | **UMM AL QUAWAIN** | AL AIN | RAS AL KHAIMAH

MIDDLE EAST & AFRICA

STARON

SOLID SURFACES



Email: anand@gssrtech.com | rafi@gssrtech.com

Mobile: 056 148 8635, 050 351 2909 | 050 897 2753



STARON

SOLID SURFACES



LOTTE, a Lifetime Value Creator that enriches the lives of all. LOTTE continues to push further beyond and pursue innovation across the diverse areas of food, retail, tourism and chemicals to continuously offer the most up-to-date lifestyle for its customers. A life of greater convenience and delight paired with a flourishing future of shared growth for all.

This is what awaits us in the future LOTTE aims to create.





CONTENTS

ABOUT

- 06 Lotte Group
- 08 Lotte Chemical
- 10 Global Presence
- 11 Interior Materials

STARON

- 12 Introduction, Design Inspiration
- 14 Benefits
- 16 Colors
- 22 Pattern trends (Supreme, Terrazzo, Solid)
- 46 Wall-cladding (Interior, Exterior)

FUNCTIONAL PRODUCTS

- 50 Evermoin
- 52 Super-Flex
- 54 Sink & Bowl

PRODUCT INFORMATION

- 56 Sheet Dimension, Treatment & Care, Certification, Warranty
- 57 Chemical Testing Results
- 58 Performance Properties (US, EU)





Lotte World Complex



Lotte New York Palace Hotel



Lotte World Mall



Lotte Ria fast-food



Lotte Mart



Lotte Duty Free

LOTTE GROUP Lifetime Value Creator

LOTTE's shining history began in 1967 and has successfully expanded through acquisitions and partnerships to become a pioneer group in Korea and globally in various industries such as Chemicals, Construction, Tourism, Retail, Finances and Food.

Today, as LOTTE looks ahead to the next fifty years, we are continuing to build a better world for everyone and continues to challenge itself to realize this ambitious dream by embracing bold change and innovation.

2020 SALES PERFORMANCE BY BUSINESS

Retail	Chemical, Construction	Tourism, Service	Food
39%	34%	14%	13%

Business ranking in Korea*	5th
Companies	46
Assets*	KRW 125.7 trillion
Sales*	KRW 56.4 trillion
Employees	180,000

* Source - May 2021 announcement by the Korea Fair Trade Commission.

LOTTE CHEMICAL Business Unit

LOTTE's Chemical Business Unit is Korea's representative chemical company founded in 1976 and has been growing into a global top-7 chemical company' by procuring product competitiveness based on its superior R&D capacities and expertise.

Constructing a diverse business portfolio with total of 26 affiliated companies producing Polymers, Monomers, Basic petrochemical products, Megatrend products, Advanced construction and Interior materials.

MAIN PRODUCTS

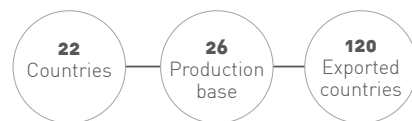
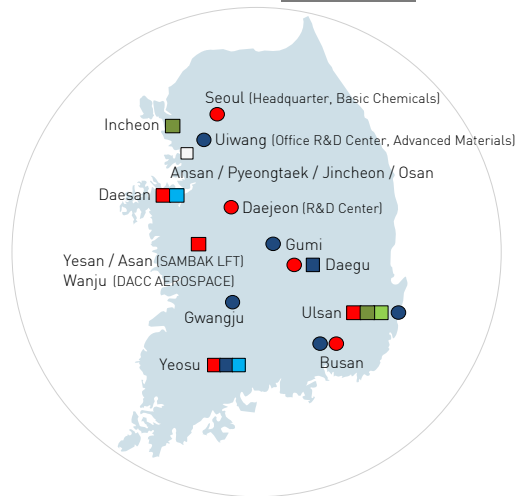
Basic Chemicals			Advanced Materials		
Petro-chemicals	Polymer	Monomer	Plastics	Interior Materials	Water Treatment Membrane

Global ranking	7
Companies	26
Equity	KRW 13,712 billion
Sales	KRW 12,223 billion
Exported countries	120
Employees	10,729

* As of 2020 business performance.



GLOBAL Presence



Company	Plant	Sales Office
LOTTE CHEMICAL (Basic Chemicals)	■	●
LOTTE CHEMICAL (Advanced Materials)	■	●
LOTTE FINE CHEMICAL	■	●
LOTTE CHEMICAL TITAN	■	●
LOTTE MCC	■	●
LOTTE BP CHEMICAL	■	●
LOTTE ALUMINIUM	□	○

LOTTE CHEMICAL Interior Materials



LC - Yeosu plant, South Korea

1992, Company commenced the manufacture of premium acrylic solid surface product STARON® brand at Yeosu plant in South Korea with production capacity 970K sheets annually.

2006, Introduced the new Tempest® collection which accentuated the world's first translucent jewel-like colors.

2015, Launched Supreme® collection featuring a natural rhythmic as the next-generation solid surface choice with beautiful, flowing veined patterns that resemble those found in marble and other natural stone.

2016, The takeover of Samsung Chemical units which gained a foothold to jump into a leading chemical company and expanding globally with high value added product line-ups through the vertical integration in the Petrochemical sector and Interior materials.

2018, Developing evermoin® antimicrobial 'more innovation & functional integrations' materials brand from Staron created based on the exclusive technology of LOTTE Chemical.



STARON Interior Materials

PREMIUM SOLID SURFACES

STARON® Solid Surfaces is an acrylic-based material made of natural minerals. Just as decorative as natural stone, but with all the advantages of a solid surface material. As it is solid and non-porous, it can be processed three-dimensionally, offering architects and designers maximal freedom.

Although STARON® incorporates all important qualities of stone, it can be worked by fabricators in a similar way as hardwood. Unlike stone however, STARON® feels warm and pleasant to the touch.

With its many advantages and versatile application possibilities, STARON® is a convincing contribution to the private, commercial and medical sectors alike.

LIFESTYLE YOUR DESIGN SOLUTIONS BY STARON

NATURAL

Displaying graceful and delicate patterns, Staron evoke the natural character of stone while offering all the practical benefits of a solid surface. For those looking to create a warmer scheme, Latte Cream is the ideal choice and perfectly suited to any type of residential environment.



LIVELY

From your house to your favourite café and restaurant, Staron can inject dynamism and spirit into any space, ensuring everybody can feel the energy in all directions. Arctic White, perfect for creating unique and remarkable spaces. A Staron colour adds drama and sophistication to any interior scheme.



URBAN

Designed with modern living in mind, The Urban Series collection from Staron introduces an effortless urban chic to interiors. Our collection is inspired by the wave of contemporary industrial design trends that have captured the world of interiors. Select the deeper and more detailed Noir Concrete to create a subtle urban style.





Supreme Flux VF113

STRETCH YOUR IMAGINATION

To Experience The Possibilities
With Staron®

WHY STARON?

Staron® solid surface materials boast dimensional flexibility and low maintenance and is ideal for a multitude of interior applications. Comprised of a wide range of color and pattern options, Staron® is non-porous, ultra-hygienic and ultimately durable. The Tempest and Supreme collections offer high-transparent gemstone textures and elegant, refined vein patterns like natural marble.

STARON BENEFITS



RELIABLE PERFORMANCE

- Cutting-edge technology sets a new standard in surface
- Able to be inconspicuously repaired due to its homogenous composition



INFINITE RANGE OF COLORS

- Over 150 color options ranging from natural to vivid
- Ongoing collaboration with color trend experts keeps Staron® commercially relevant



GLOBAL NETWORK

- Regional branch offices and product distribution networks worldwide



HYGIENIC SURFACE

- Non-porous surface inhibits growth of mold and bacteria
- Resistant to heat and abrasion
- Able to refurbish to a new condition



IMPERCEPTIBLE SEAMS

- Consistent color and texture on every sheet provides a smooth and seamless surface
- Installed without gaps, crevices, or obvious joint-lines



TRANSLUCENCY

- Creative back-lighting effects created by altering the thickness of the material to allow transmission from a low-energy light source



DIMENSIONAL FLEXIBILITY

- Thermo-formable into three-dimensional shapes
- Excellent workability enables virtually unlimited design possibilities



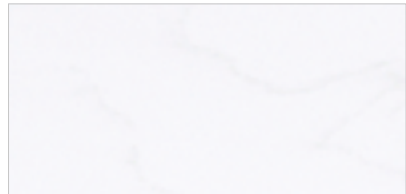
RELIABLE QUALITY

- Advanced quality control policy and a commercial 10-year warranty
- Certified eco-friendly by Greenguard and Scientific Certification System



COLORS OF STARON®

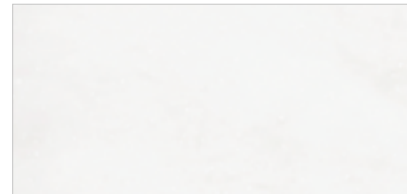
SUPREME



Cotton White VC110



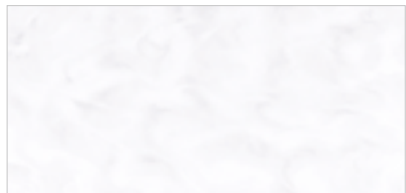
Morning Sky VM114



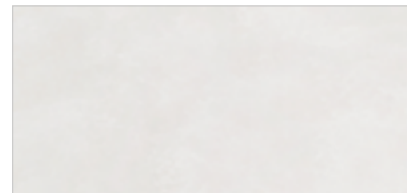
Tranquil VT115



Downy White SF100



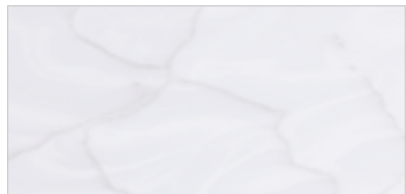
Downy Dove SP105



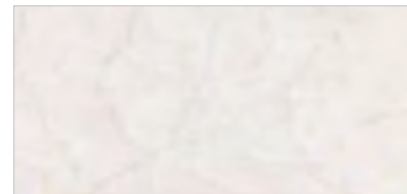
Flux VF113



Arctic White VA311



Rotor Cloud VR322



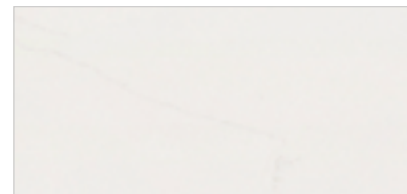
Latte Cream VL343



Ocean View V0171



Magnolia VM143



Beige Granite VB172



Natural Bridge VN144



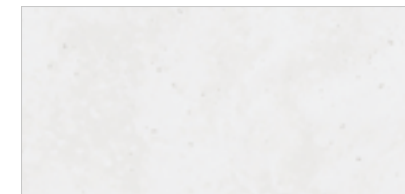
Dandelion VD175



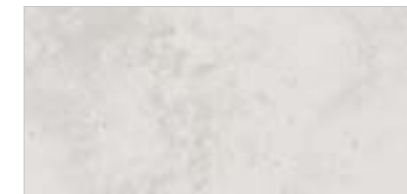
Loam VL155



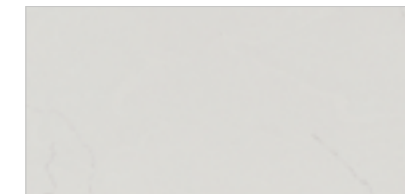
Rotor Cloud VR322



Cloudbank VC118



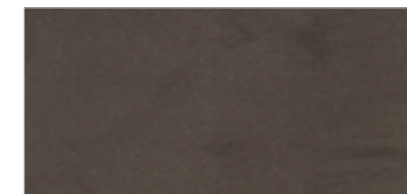
Dawn VD126



Urban Grey VU127



Ash Concrete VA129



Noir Concrete VN180



Presto VP159



TEMPEST



Peak FP100



Twilight FT113



Shell FS115



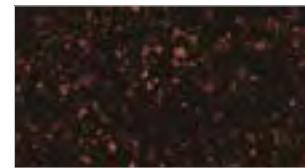
Mystic FM178



Rattan FR124



Coffee Bean FC158



Radiance(Shimmer) FR148



Terrazzo Como FT191

QUARRY



Mosaic Dalmatian QD212



Quarry Oyster TO310



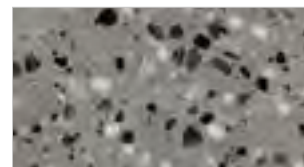
Terrazzo Bologna NT970



Quarry Ridge QR278



Terrazzo Venezia NT150

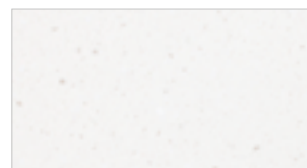


Terrazzo Torino NT981

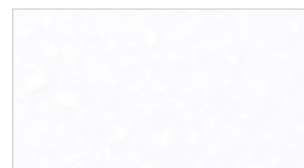


Quarry Starred(N) QS288

PEBBLE



Pebble Moon PM832



Pebble Frost PF812



Pebble Swan PS813



Pebble Boulder PB852



Pebble Saratoga PS820



Pebble Chiffon PC842



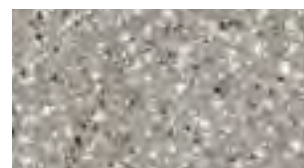
Pebble Gold PG840



Pebble Terrain PT857



Pebble Blue PB870

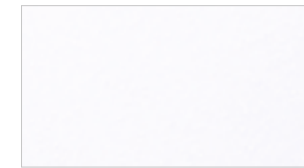


Pebble Grey PG810

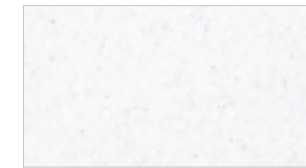


Pebble Ebony PE814

ASPEN



Aspen Glacier AG612



Aspen Snow AS610



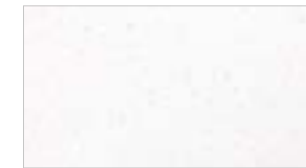
Aspen Alder AA625



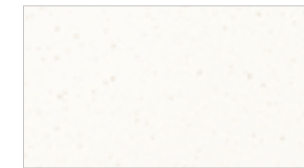
Aspen Concrete AC629



Aspen Eggshell AE642



Aspen Iceberg AI612



Aspen Glow AG636



Aspen Brown AB632

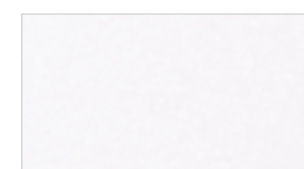


Aspen Grey AG620

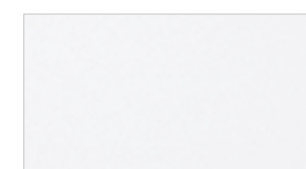


Aspen Mine AM633

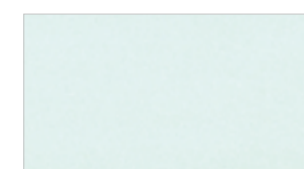
SANDED



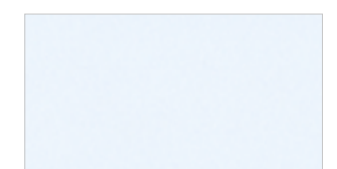
Sanded Icicle SI414



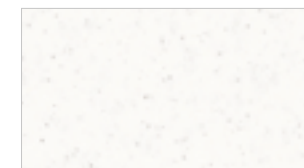
Sanded Dover SD413



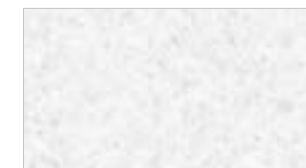
Sanded Mint SM463



Sanded Iceblue SI462



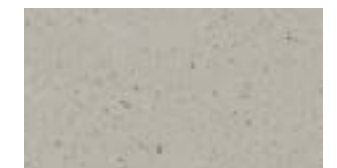
Sanded Birch SB412



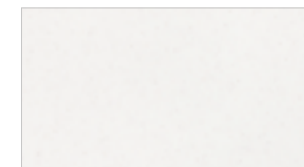
Sanded W-Pepper WP410



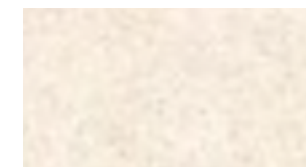
Sanded Grey SG420



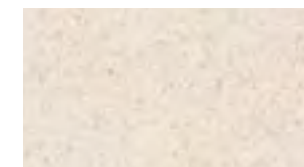
Sanded Heron SH428



Sanded Cream SM421



Sanded Sahara SS440



Sanded Gold Dust SG441



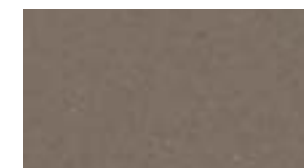
Sanded Vermillion SV430



Sanded Clay SC475



Sanded Chestnut SC457



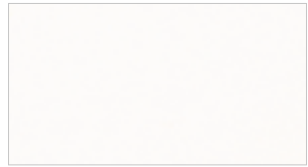
Sanded Taupe ST486



Sanded Onyx SO423



METALLIC



Metallic Yukon EY510



Metallic Sleeksilver(N) ES582

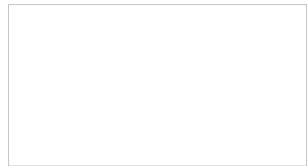


Metallic Atrous EA599

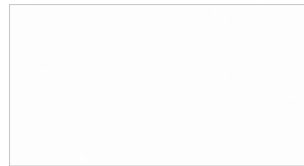


Metallic Galaxy EG595

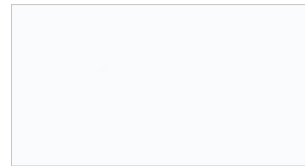
SOLID



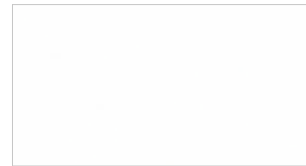
Dazzling White SD001



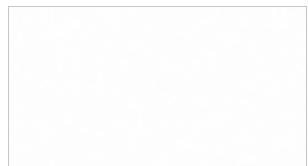
Bright White BW010



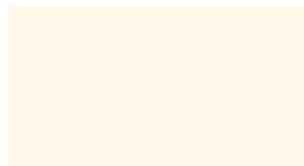
Quasar White SQ019



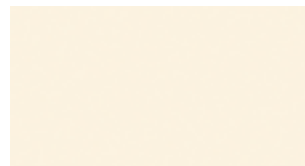
Pearl SP011



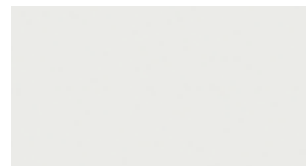
Infinity IF188



Natural SV041



Ivory SI040



Fog SF020



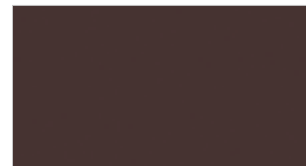
Bliss SB022



Serene SS023



Steel ST023



Iris SI056



Oasis SO064



Sunflower(N) SS042



California Poppy(N) SC052



Univers(N) SU053



Ultramarine SU067

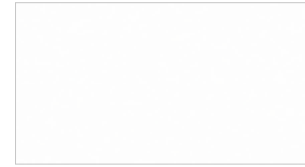


Forest SF061

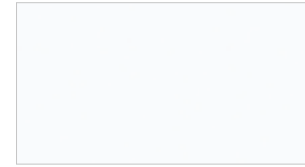


Piano Black GP790

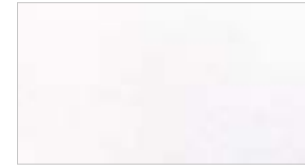
EVERMOIN (Antimicrobial)



Angel White MA020



Ultra Bright MU010



Limpio ML612



Granville MG030



Downy White SF100

Printed representation of colors may vary from actual samples.
Please review actual sample prior to selection.
To view new colors in greater detail, please visit www.staron.com

- Translucent
- Antimicrobial
- Exterior Material
- Eco-Friendly
- Super Flex





SUPREME Intimate Moments

Translucent / Mystical / Organic Pattern

The upgraded Supreme III from Staron® is inspired by marble that have unexpected movements and cracks of nature formed by long-enduring harsh natural conditions. The vein conveys a sense of depth by the effects of reflection, refraction, and overlay through light. The lighting transmission effect relieves people's anxiety and isolation by providing emotional stability. Depending on the presence or absence of lighting, three types of interpretation are possible, so it can be used not only for countertops but also as wall-claddings.

Enjoy our three new fabulous decors in the Supreme III series;

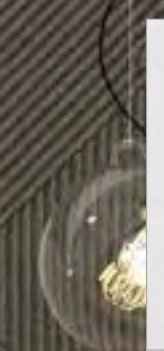
Arctic White with marble-like veins on subtle white.

Rotor Cloud that stands out with the harmony of tinted grey and bold white veins.

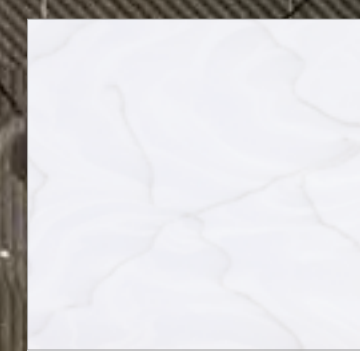
Latte Cream like the dawn of winter, laid down onto the color of the vast lands.



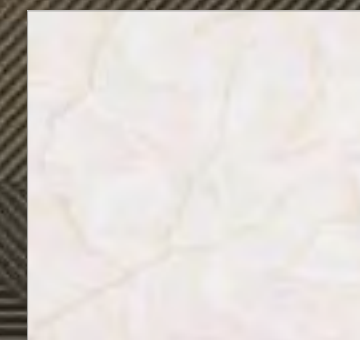
Arctic White VA311



Arctic White VA311



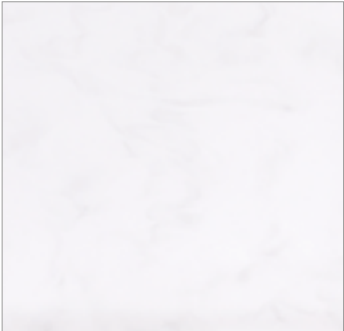
Rotor Cloud VR322



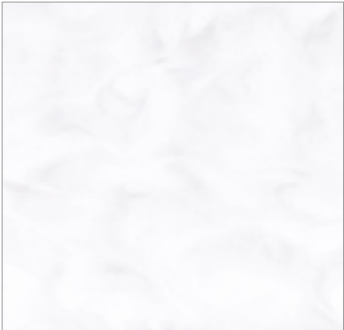
Latte Cream VL343



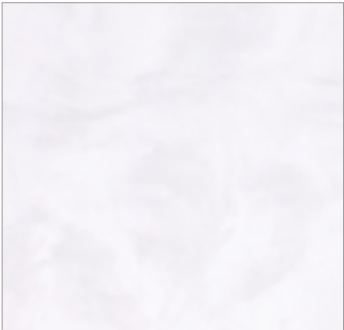
Rotor Cloud VR322



Downy White SF100



Downy Dove SP105



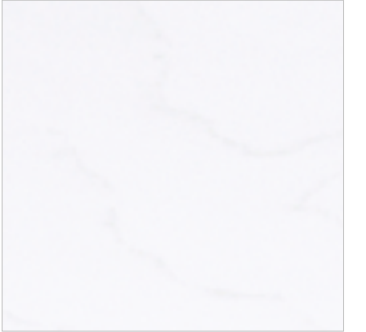
Evermoir Granville MG030

Downy White SF100 and Ultramarine SU067





Cotton White VC110



Cotton White VC110



Morning Sky VM114

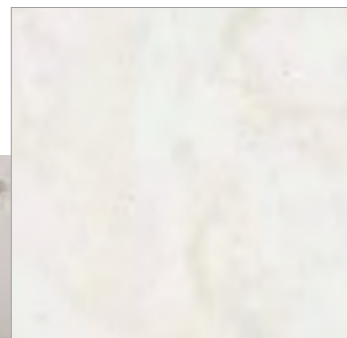


Urban Grey VU127

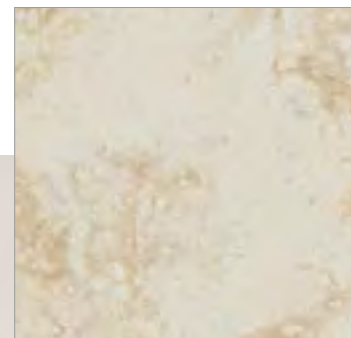




Magnolia VM143



Dandelion VD175



Loam VL155

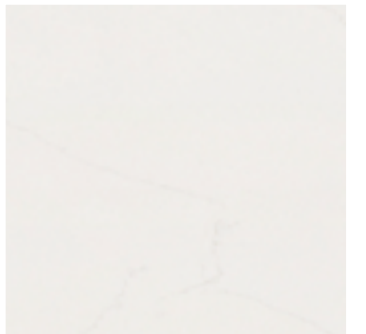


Dandelion VD175





Design by Tania Kloester, TK Design, Australia.



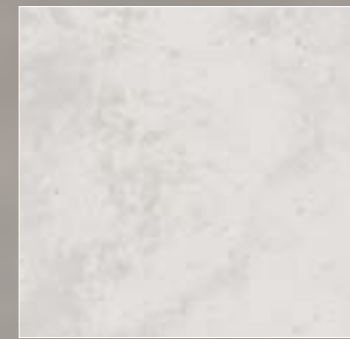
Beige Granite VB172



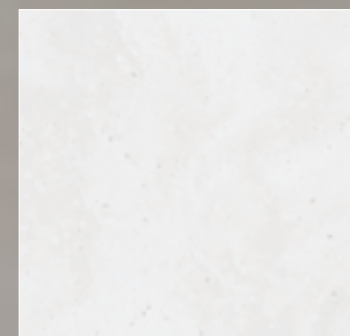
Ocean View V0171

Ocean View V0171





Dawn VD126



Cloudbank VC118



Ash Concrete VA129

Ash Concrete VA129



TERRAZZO

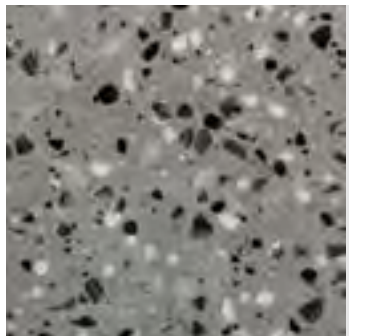
Designed With Modern Living

Introducing the Terrazzo Collection, a new addition to the Staron portfolio. Featuring contrasting flecks, these new Terrazzo shades offer homeowners and interior designers the authentic look of Terrazzo and the exceptional qualities of Staron. An on-trend surface suited to any kind of space. Packed full of contrasting flecks, which run through the entire thickness of the material, the new design combines a stunning appearance with a seamless finish.





Terrazzo Torino NT981

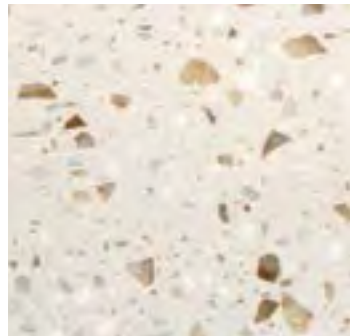


Terrazzo Torino NT981



Terrazzo Como FT191





Terrazzo Bologna NT970



Terrazzo Venezia NT150



Terrazzo Venezia NT150





SOLID
Color Healing

Distinct / Optimistic / Energizing

Color conveys simple yet powerful messages, and it contains numerous emotions. Intense colors communicate rich sensibility as well as lively and friendly atmosphere full of positive energy. These refreshing colors inspired by nature can be expected to have greater effects when harmonized with the existing STARON® colors in various commercial spaces.

Ultramarine

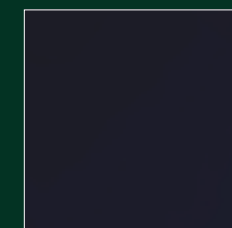
Brings tranquility and comfort to people with its positive color soothing effect. Blue energizes the space and at the same time calms the mind, giving a sense of comfort and relief.

Forest

Is a vivid mint color with a hint of bluish green. It carries a pleasant, modern and outgoing mood. The positive energy of Forest gives life to the space and helps alleviate people's anxiety and depression, since it inherits healing aspects.

Piano Black

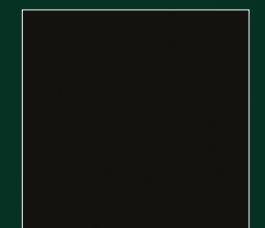
Is a vivid black with an elegant, sophisticated and modern mood that can emphasize the sensual simplicity of a space when used within an appropriate color scheme. This is a timeless beauty that allows unlimited design.



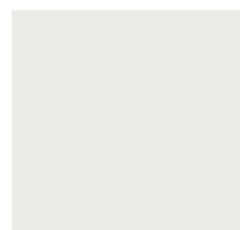
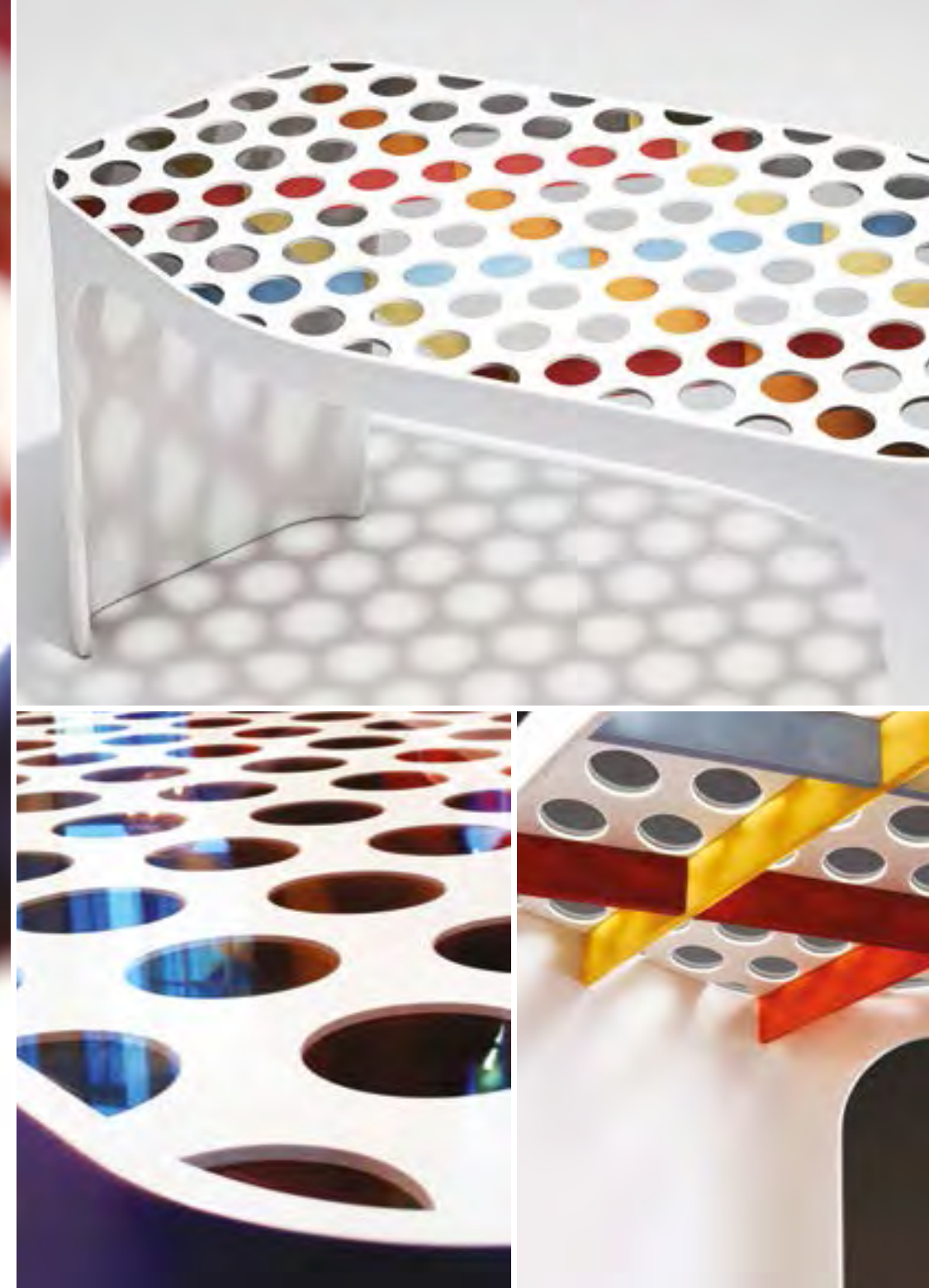
Ultramarine SU067



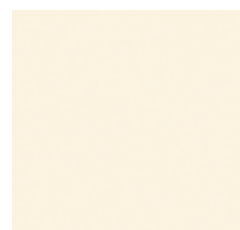
Forest SF061



Piano Black GP790



Fog SF020



Ivory SI040



Sunflower(N) SS042



Oasis S0064



California Poppy(N) SC052



Univers(N) SU053



Serene SS023



Steel ST023

INTERIOR

Wall-cladding

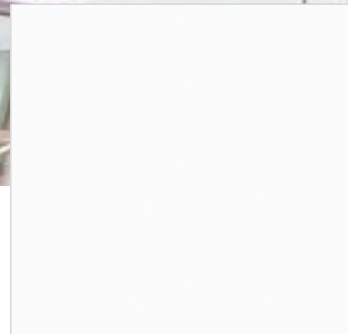


Samsung HR Development Center - Exhibition Hall, Korea

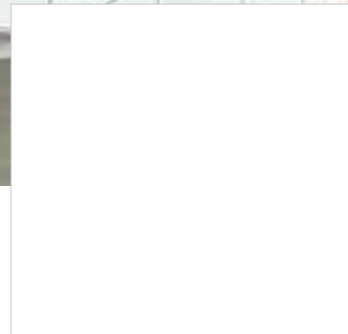
EXTERIOR
Wall-cladding



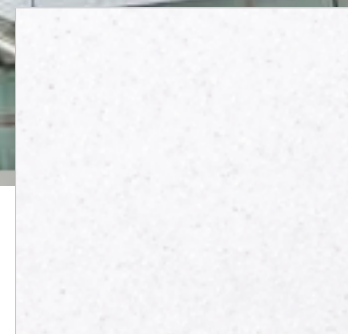
Bright White BW010



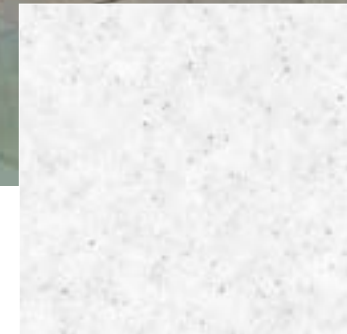
Quasar White SQ019



Bright White BW010



Aspen Snow AS610



Sanded White Pepper WP410

Cha Hospital, Korea



ANTIMICROBIAL STARON® For Healthcare

evermoin®

The healthiest Ultra-Hygienic choice for your design

Staron evermoin® can be applied to almost any interior space within a healthcare facility. Imagine casework, work-stations and wall-cladding in a functional and renewable material that is durable as well as ultra-hygienic.

BENEFITS OF STARON EVERMOIN®



Ultra-Hygienic
Speedy ultra-hygienic effect and action on representative bacteria and fungi



Durability
Excellent Ultra-Hygienic retention and Confirm quality stability and durability

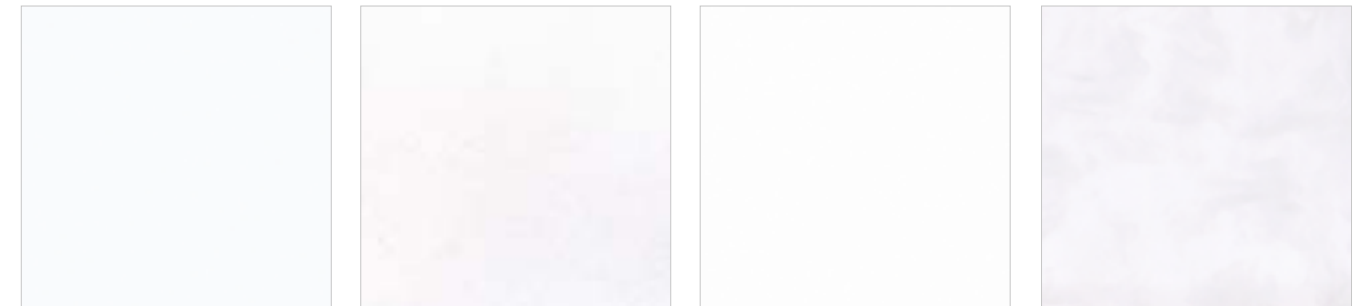
Safety
Material certification harmless to human body and environment (EPA, NSF, FDA)

Eco-friendly
Achieved SCS RECYCLED CONTENT CERTIFICATION which demonstrates our commitment to conserving natural resources. [SCS Recycle 6%]

SAFETY PROPERTIES

Obtained certification that guarantees sanitary safety and reliability harmless to the human environment such as Japan SIAA and US NSF and FDA.

Harmless to human body		Safe for food contact	Eco-friendly
			
SIAA Society of International sustaining growth for Ultra-Hygienic Articles	EPA US Environmental Protection Agency	NSF National Sanitation Foundation	Eco-Friendly SCS Global Services



Ultra Bright MU010

Limpio ML612

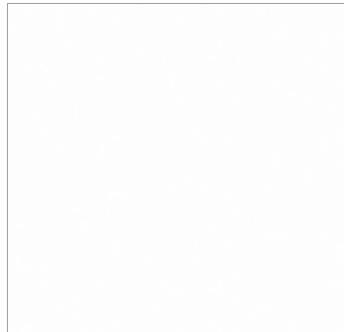
Angel White MA020

Granville MG030



SUPER-FLEX STARON®

For Dramatic Curves & Flexibility



Infinity IF188

DRAMATIC CURVES & DESIGN

Minimum Radius: 0mm

Staron® Super Flex boasts superior thermoplastic capabilities that can create limitless possibilities of shapes and designs from the slightest curves to extreme bends.

HIGH ELONGATION

The elongation rate of Staron® Super Flex is two times higher than that of existing Staron®.

Staron® Super Flex can be used for architectural and interior applications, such as high-performance wall-cladding or kitchen, bathroom and furniture surfaces.

TIME REDUCTION

Staron® Super Flex can be thermoformed at lower temperature and in shorter heating time compared to the thermoforming process of existing Staron®.

Product	Oven Temperature
Staron Solid (12T)	302°F (150°C)
Staron Infinity (12T)	284°F (140°C) 302°F (150°C)

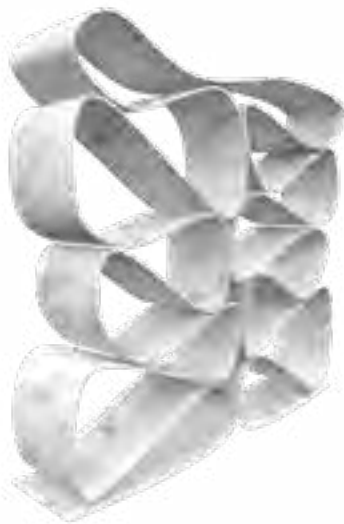
Time	Folding limit (Radius)
45-80 min	2" (50mm)
20-30 min 15-30 min	0" (0mm)

CAUTIONS FOR PROCESSING

Please note that variations in heating time and temperature conditions depending on the oven equipment. The table above shows the thermoforming conditions using convection ovens.

Thermoforming at temperatures above 180° can lead to decreased performance. Damage on Staron® Super Flex sheet can occur at temperatures above 185°. (using convection ovens)

Thermoforming time is shorter when using platen ovens.



Dongdaemun Design Plaza & Park, Korea



University of Economics & Business, Vienna



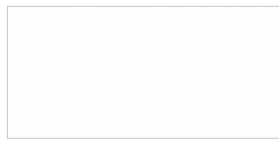
Heidi.com Flagship Store, Switzerland

Designs by Zaha Hadid Architects

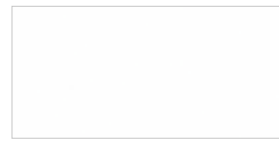


SINK & BOWL FROM STARON®

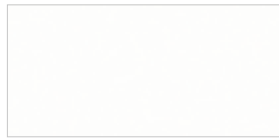
COLOR OPTIONS



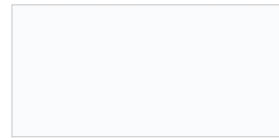
Bright White BW010



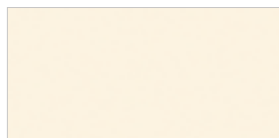
Pearl SP011



Pure white SP016



Quasar White SQ019



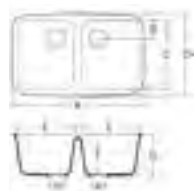
Ivory SI040



A2311

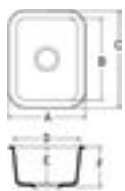
KITCHEN / UTILITY SINKS

A2311



- A 794mm
- B 110mm
- C 421mm
- D 481mm
- E 348mm
- F 235mm
- G 250mm
- H 90mm

A1121



- A 326mm
- B 356mm
- C 416mm
- D 266mm
- E 165mm
- F 180mm
- H 90mm

A1231



- A 592mm
- B 422mm
- C 482mm
- D 532mm
- E 187mm
- F 202mm
- H 90mm

A3211



- A 548mm
- B 86mm
- C 356mm
- D 396mm
- E 508mm
- F 156mm
- G 173mm
- H 45mm

A3181



- A 462mm
- B 94mm
- C 336mm
- D 376mm
- E 422mm
- F 139mm
- G 156mm
- H 45mm

A1181



- A 460mm
- B 400mm
- C 460mm
- D 400mm
- E 208mm
- F 225mm
- H 90mm

B3290



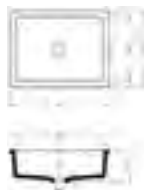
- A 750mm
- B 400mm
- C 450mm
- D 700mm
- E 185mm
- F 200mm
- H 90mm

B3180



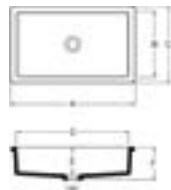
- A 450mm
- B 400mm
- C 450mm
- D 400mm
- E 175mm
- F 190mm
- H 90mm

B3150



- A 427mm
- B 278mm
- C 327mm
- D 378mm
- E 116mm
- F 138mm
- H 45mm

B3190

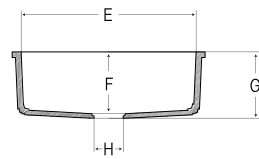
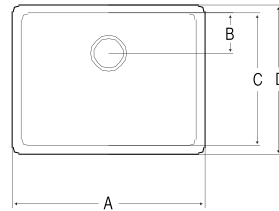


- A 524mm
- B 274mm
- C 327mm
- D 474mm
- E 116mm
- F 138mm
- H 45mm

BOWLS (BASINS)

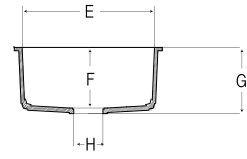
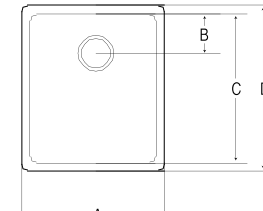
NEW KITCHEN / UTILITY SINKS

B1212



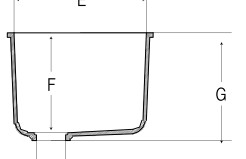
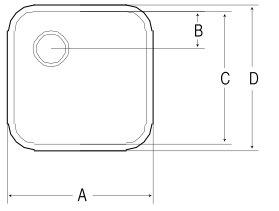
- A 581mm
- B 122mm
- C 400mm
- D 451mm
- E 530mm
- F 185mm
- G 200mm
- H 90mm

B1177



- A 450mm
- B 120mm
- C 450mm
- D 500mm
- E 400mm
- F 185mm
- G 200mm
- H 90mm

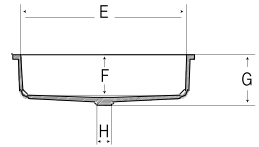
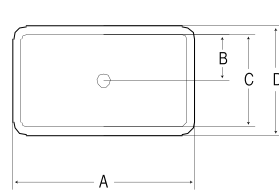
B1160



- A 440mm
- B 112mm
- C 400mm
- D 440mm
- E 400mm
- F 300mm
- G 325mm
- H 90mm

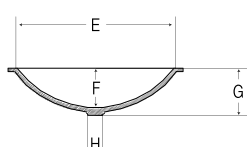
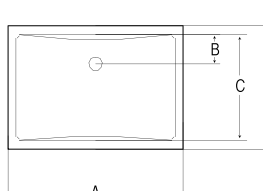
NEW BOWLS (BASINS)

B3200



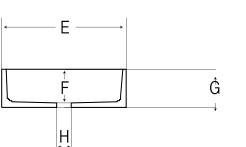
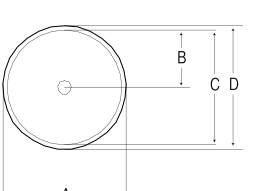
- A 550mm
- B 140mm
- C 280mm
- D 330mm
- E 500mm
- F 120mm
- G 140mm
- H 44mm

B3192



- A 530mm
- B 89mm
- C 320mm
- D 370mm
- E 480mm
- F 121mm
- G 141mm
- H 44mm

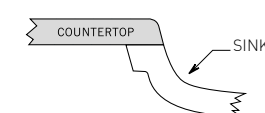
A3148



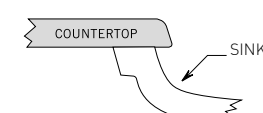
- A 376mm
- B 175mm
- C 35mm
- D 376mm
- E 350mm
- F 97mm
- G 115mm
- H 44mm

MOUNTING OPTIONS

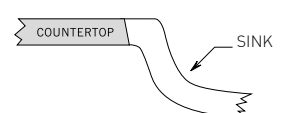
Seam mount



Under mount



Angled mount



PRODUCT Information

STARON® SHEET DIMENSION

STARON GROUP	THICKNESS	WIDTH	LENGTH
	mm	mm	mm
Solid, Sanded, Aspen, Metallic	6	760	2,500
	12	760	3,680
Solid, Sanded, Aspen, Pebble, Metallic, Quarry, Tempest, Supreme	12	760	3,680

TREATMENT & CARE

STARON® surfaces offers you an easy-care, durable material that can be cleaned, maintained or repaired with little effort. The maintenance effort required for STARON® and its durable flawless surface in general depends on the colour and the selected finish. Brighter colours and matt finishes require less care than dark colours and glossy finishes. For standard care and maintenance, wipe STARON® surfaces with a damp cloth or sponge on a daily basis. To get more info about Staron maintenance instructions, please visit our website.

STARON® CERTIFICATION



STARON® 10-YEAR LIMITED WARRANTY

The 10-year warranty applies to Staron, Tempest and Supreme Collection products that have been installed in an interior, commercial-use or residential application.

For more details, please consult with your Staron products distributor, or visit www.staron.com

CHEMICAL Testing Results

We conducted chemical tests on various surface contaminations prone to exist. These contaminants were dropped onto the surface and covered with glass plates for 16 hours. Surfaces of these areas were then scrubbed with damp pads with detergent and tested for the results.

Contaminants

- | | | |
|--------------------------------|--|-----------------------------------|
| - Acetic acid (10%) | - Soapless detergents | - Hydrochloric acid (20, 30, 37%) |
| - Ammonia | - Sodium hydroxide solution (5, 10, 25, 40%) | - Iodine (1%) |
| - Amyl acetate | - Sodium sulfate | - Lemon juice |
| - Ball point pen | - Sugar (sucrose) | - Mercurochrome (2%) |
| - Bleach (household type) | - Sulfuric acid (25, 33, 60%) | - Methyl ethyl ketone |
| - B-4 body conditioner | - Tetrahydrofuran | - Methyl red (1%) |
| - Carbon disulfide | - Tomato juice | - Mustard |
| - Citric acid (10%) | - Uric acid | - Naphthalene |
| - Cigarette (nicotine and tar) | - Washable inks | - Olive oil |
| - Cooking oils | - Xylene | - Perchloric acid |
| - Cupra ammonia | - Acetone | - Shoe polish |
| - Ethanol | - Ammonium hydroxide (5, 28%) | - Sodium bisulfate |
| - Ethyl ether | - Amyl alcohol | - Soy sauce |
| - Gasoline | - Benzene | - Sulfuric acid (25, 33, 60%) |
| - Grape juice | - Blood | - Tea |
| - Household soaps | - Butyl alcohol | - Toluene |
| - Hydrogen peroxide | - Carbon tetrachloride | - Urea (6%) |
| - Ketchup | - Calcium thiocyanate (78%) | - Vinegar |
| - Lipstick | - Coffee | - Wine |
| - Methanol | - Cottonseed oil | - Zinc chloride |
| - Methyl orange (1%) | - Dishwashing liquid/powders | |
| - Mineral oil | - Ethyl acetate | |
| - Nail polish | - Formaldehyde | |
| - N-hexane | - Gentian violet | |
| - Pencil lead | - Hair dyes | |
| - Permanent marker pen | | |



Results

Most pollutants can be easily removed from the surface with damp pad with neutral detergent.

DISCLAIMER

The information contained herein is provided by LOTTE CHEMICAL Co., Ltd. for information purposes only and should be used by individuals with technical experience and knowledge in the area. LOTTE CHEMICAL Co., Ltd. does not make any representation or warranties of the usefulness or expected result of the information, and does not assume any responsibility whatsoever related to the use of the information. Exclusion of the implied warranties may not apply in certain jurisdictions.



PERFORMANCE Properties

EU STANDARDS

PROPERTY	TEST RESULT	UNIT	TEST PROCEDURE
Tensile strength	6,000	psi	ASTM D 638
Tensile modulus	600,000	psi	ASTM D 638
Flexural strength	10,000	psi	ASTM D 790
Flexural modulus	1,000,000	psi	ASTM D 790
Elongation	0.5	%	ASTM D 638
Hardness	92 65	Rockwell "M" Scale Barcol impressor	ASTM D 785 ASTM D 2583
Thermal expansion	2.0x1.0 ⁻⁵	in/in F ⁰	ASTM D 696
Gloss (60 Gardner)	Between 5-20		NEMA LD-3
Color stability	No change-200	hrs	NEMA LD-3
Stain resistance	Passed Rating 41		ANSIZ 124
Abrasion resistance	Passed		ANSIZ 124
Boiling water surface resistance	No effect		NEMA LD-3
High temperature resistance	No effect		NEMA LD-3
IZON Impact resistance (Notched)	0.28ft.	lbf/in	ASTM D 256
Ball drop 1/2" (12 mm) sheet	144" No failure	w/1/2lb ball	NEMA LD-3
Fungi and Bacterial resistance	No growth		ASTM G 21, G22
Specific gravity Solid colors Patterened colors	1.72 1.69		ASTM D 792
Water absorptionw	0.04 0.11	%,(1/2", 24hrs) %,(1/8", 24hrs)	ASTM D 570
Flammability Flame spread Smoke density	Class A/Class 1 10 10		UBC 8-1 ASTM E 84 ASTM E 84
Radiant heat resistance	No visual effect		NEMA LD-3
Toxicity	84.4 (Solid color) 81.8 (Patterned color)	g g	Pittsburgh test protocol (LC50 Test)

EU STANDARDS

PROPERTY	TEST RESULT	UNIT	TEST PROCEDURE
Density	1.74	g/cm ³	DIN ISO 1183
Flexual modulus	9030	Mpa	DIN EN ISO 178
Flexual strength	64.5	Mpa	DIN EN ISO 178
Elongation at break	0.83	%	DIN EN ISO 178
Compressive strength	181	Mpa	EN ISO 604
Impact resistance (Spring force)	→25	N	DIN EN 438 -2
Impact resistance (Height)	180	cm	DIN EN 438 -2
Surface hardness(Moh's index)	2-3		DIN EN 101
Abrasion behavior (Lost weight)	0.56	g	ISO 4586 p6
	0.26	%	ISO 4586 p6
Anti-slip properties with 100µm	R9		DIN 51130:2009 -5
Anti-slip properties with 120µm	R9		DIN 51130:2009 -5
Anti-slip properties with 150µm	R9		DIN 51130:2009 -5
Light fastness	→ 6	Blue wool scale	DIN EN 105 -B02
Electrostatic surface resistance	→1x10 ¹²	Ω	EN 61340 -4-1
Electrostatic surface resistivity	960x10 ⁹	Ω	EN 61340 -5-1
Dimensions stability at 20 °C	Dimension	-0.02	mm
	Gross weight	-0.02	%
Thermal conductivity	0.53 ~ 0.57	W/(m.K)	DIN EN 12664
Thermal resistance	0.083 ~ 0.092	m ² .K/W	DIN EN 12664
Thermal expansion	3.6 * 10 ⁻⁵	mm/mm°C	ASTM D 696
Fungal and Bacterial resistance	No growth	-	ASTM G 21, G22
Euroclass for reaction to fire	B-s1 d0	-	EN 13501 -1
Fire properties (British)	class0	-	BS 476 part 6 & 7
Fire properties (Germany)	B1	-	DIN 4102 -1
Fire properties (France)	M2	-	NF P 92 -501





Building on the 50 years of growth we achieved through our ceaseless efforts to push ever further and pursue innovation, we are now bounding ahead yet once more to become a truly lasting centennial company. We will emerge as a company that contributes to the creation of social value and pursues a sustainable future and one that is both beloved and trusted by customers the world over.

At LOTTE, our journey continues to bring our ambitious goal to fruition, as we become a global business that lends itself to the creation of a more flourishing life for all.

staron®

Solid Surfaces



www.staron.com



LOTTE CHEMICAL



Email: anand@gssrtech.com | rafi@gssrtech.com

Mobile: 056 148 8635, 050 351 2909 | 050 897 2753